

zippo®

2006 PRODUCT DISPLAYS &
POINT-OF-PURCHASE ITEMS



zippo®

DISPLAYS

DISPLAY PANELS HOLD BLACK PLASTIC GIFT CARDBOARD BOXES, AND INDIVIDUAL TINS.



142632
 Display 192 Zippo products in this floor stand with swivel base. Each side holds 96 pieces.
 Dimensions: 27" x 27" x 80"
 68.58cm x 68.58cm x 203.2cm



142633
 Display 30 Zippo products in this counter stand with swivel base. Each side holds 15 pieces.
 Dimensions: 16" x 16" x 31"
 40.64cm x 40.64cm x 78.74cm



Small Showcase
142611
 Lighted Floor Stand with up to three adjustable shelves. Lockable base door provides ample storage for additional stock.
 Dimensions: 16" x 16" x 41"
 40.64cm x 40.64cm x 104.1cm



Large Showcase
142612
 Lighted Floor Stand with up to four adjustable shelves. Lockable base door provides ample storage for additional stock.
 Dimensions: 27" x 27" x 80"
 68.58cm x 68.58cm x 203.2cm

All electric displays are 110V (U.S. Standard)

DISPLAYS

DISPLAY PANELS HOLD BLACK PLASTIC GIFT CARDBOARD BOXES, AND INDIVIDUAL TINS.



142145

Compact countertop display holds eight Zippo products in most packaging variations. Features include a Zippo header, security cable (optional), and lock.

Dimensions: 8.5" x 6" x 18.875"
21.59cm x 15.24cm x 47.94cm



142525

Countertop Display holds up to 16 Zippo products in a variety of packaging options. Features include a Zippo header, security cable, and lock.

Dimensions: 13.75" x 6" x 18.875"
95.88cm x 15.24cm x 47.94cm



142129/EFC

Countertop Display holds up to 10 Zippo products in a variety of packaging options and a Zippo 4 oz. Lighter Fluid can.

Dimensions: 12.5" x 7.5" x 17.5"
31.75cm x 19.05cm x 44.45cm



◀ 142523 (ZMBO60)

Battery-operated display with on/off switch. Also manual turn. Reflective mirrored prism utilizes natural light to illuminate Zippo header. Displays 60 Zippo products in gift boxes, cardboard boxes, or individual tins. Uses four standard "D" batteries (included).

Dimensions: 14.75" x 14.5" x 25.25"
37.46cm x 36.83cm x 64.13cm

142462 (ZM60) not shown

Light and Motion Display
Displays 60 Zippo products in gift boxes, cardboard boxes, or individual tins.

Dimensions: 15.875" x 15.875" x 27"
40.32cm x 40.32cm x 68.58cm

142129 - (International Version)

Countertop Display holds up to 10 Zippo products in a variety of packaging options. Does not include fuel can.

Dimensions: 12.5" x 7.5" x 17.5"
31.75cm x 19.05cm x 44.45cm

All electric displays are 110V (U.S. Standard)

DISPLAYS

new look



142470 (FS96)

Designed for countertop use, this unit has all the features of FSB96, except the storage base.
 Dimensions: 15.875" x 15.875" x 37"
 40.32cm x 40.32cm x 93.98cm

142470 (Display) & 142477 (Base)(FSB96)

Display 96 Zippo products on top, and store extra stock on two shelves in the lockable base. Base unit ships flat, and provides ample storage for additional stock.
 Dimensions: 15.875" x 18.875" x 67"
 40.32cm x 47.94cm x 170.2cm

new



Fuel Panel No. 142130

Use your 60 piece ZM to showcase Zippo fuel and accessories with this display panel. Features 2 empty domestic Zippo butane cans, 2 empty domestic Zippo lighter fluid cans, and flint card (for display purposes only).
 Dimensions: 7.75" x 18.75"
 19.68cm x 47.62cm

ZM Retro-Fit Base No. 142418

Retro-fit base allows the current 60 and 96 piece ZM displays to stack correctly on the top of Zippo's older floor stands. (The foot print has changed on "new style" 60 & 96 piece ZMs; displays will not fit properly on previous floor stands without this addition).
 Dimensions: 17.25" x 17.25"
 43.81cm x 43.81cm



All electric displays are 110V (U.S. Standard)

MPL™ DISPLAYS



48 Piece End Cap Display

No. 142130KD

12 facings by 4 deep.

Display holds 4 of the 12-pack self displays.

Durable cardboard construction.

Dimensions: 16" x 16" x 63"

40.64cm x 40.64cm x 160.02cm



12-Pack Self Display

No. 142580

2 facings by 6 deep.

Durable cardboard construction.

Complete with 12 MPLs.

Dimensions: 11" x 11.75" x 10.5"

29.94cm x 29.845cm x 26.67cm



12-Pack Self Display

No. 142537

3 facings by 4 deep.

Durable cardboard construction.

Complete with 12 MPLs.

Dimensions: 15.75" x 7.75" x 11.75"

40.005cm x 19.685cm x 29.845cm

MPL™ DISPLAYS PRESENT YOUR MPL IN AN ATTRACTIVE AND STYLISH DISPLAY.



20 Piece Clear Display

No. 142750

4 facings by 5 deep. Can be used as a counter or wall display. Heavy-duty frosted plastic with two shelves. MPLs not included.

Dimensions: 6" x 8" x 16"

15.24cm x 20.32cm x 40.64cm

8 Piece Prepack & Chrome Display *(not shown)*

No. 142581

Same as the 4 Piece Chrome Display. Includes 8 gift boxed MPLs.

Dimensions: 10.5" x 5.25" x 11.5"

26.67cm x 13.335cm x 29.21cm



Individual Display

No. 142535

Heavy-duty plastic bottom with metal header. MPLs not included.

Dimensions: 7.75" x 5.875" x 11.125"

19.685cm x 14.9225cm x 28.2575cm



4 Piece Chrome Display

No. 142536

Heavy-duty plastic bottom with metal backing (three MPLs are shown upright, one is displayed horizontally in the foreground).

MPLs not included.

Dimensions: 10.5" x 5.25" x 11.5"

26.67cm x 13.335cm x 29.21cm

MPL™ SIGNAGE JUST LIKE THE MPL, THESE SIGNS HAVE MANY USES.



These panels fold into a triangle as shown above.

ZM Topper/Counter Card - MPL™

No. 142269

Great for the top of your ZM display or on the counter.

(2 panels-Silver MPL, 1 panel-Black MPL)

Dimensions: 8.5" x 9"/panel (3 panels)

21.59cm x 22.86cm/panel (3 panels)



Hanging MPL™

No. 142264

Plastic two-sided MPL sign. Easy to hang.

Includes string to slip through tack hole on sign.

Dimensions: 11" x 29"

27.94cm x 73.66cm

SIGNAGE

new



Flame Light Box

No. 142634

The iconic Zippo flame glows along with the Zippo logo. Perfect for counter top or window display.

Dimensions: 7.25" x 14" x 5.625"
18.41cm x 35.56cm x 14.29cm



Neon Lighter Sculpture

No. 142586

Neon Zippo lighter on black base with Zippo logo.

International version also available, please see price list.

Dimensions: 12" x 9"
30.48cm x 22.86cm

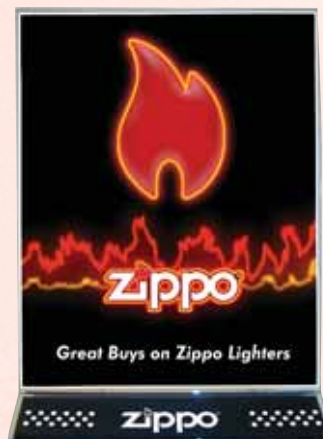
Counter Card Display

No. CCD-05

Clear plexiglas panels offer easy display of standard 8.5" x 11" sheets.

Base plate is screen printed with Zippo logo and chimney pattern.

Dimensions: 8.75" x 11.875"
22.22cm x 30.16cm



Zippo Rotating Sign

No. 142255

Illuminated electric sign.

Dimensions: 18" x 21"
45.72cm x 53.34cm



3D Logo Sign

No. 142252

Illuminated electric sign.

International version also available, please see price list.

Dimensions: 24" x 9"
60.96cm x 22.86cm

SIGNAGE



new look

Lenticular Motion Sign

No. 142126

Moving lighter graphic with opening and closing lid. Effective with or without battery operation.

Dimensions: 8.125" x 9"

20.64cm x 22.86cm



Neon Clock

No. 142588

Battery operated illuminated clock with electric style neon.

International version also available, please see price list.

Dimensions: 14" diameter

37.47cm diameter

new look



Metal Sign

No. 142225

Classic, yet trendy metal sign features embossed graphics and includes tack holes to hang on any flat vertical surface.

Dimensions: 15" x 10"

38.1cm x 25.4cm



Light-Up Box

No. 142223

Zippo is aglow with stunning neon 3-D effect. Acrylic unit stands on counter or hangs on wall.

Dimensions: 16.25" x 16.25" x 3.75"

41.275cm x 41.275cm x 9.525cm

SIGNAGE



Reverse side of sign

Open/Closed Door Sign

No. 142222

Open the lighter to reveal "open". Close lid to reveal "closed please visit again". Four suction cups securely mount sign on glass door or window.

Dimensions: 7" diameter
17.78cm diameter



3-D Zippo Dangler

No. 142251

3-D plastic lighter sign.

Dimensions: 19.75" x 26.25"
50.17cm x 66.68cm



Window Decals

No. DECO (outside application)

Easy to apply or remove, leaves no residue. UV ink resists fading.

Dimensions: 4" x 4.75"
10.16cm x 12.07 cm



Static Cling Sticker - Zippo For Real

No. SCS02

Inside application surface for doors or windows.

Dimensions: 4" x 6"
10.16cm x 15.24cm



Vertical Hanging Banner

No. 142249

High quality poplin cloth banner. Hang from ceiling or banner stand (below).

Dimensions: 20" x 60"
50.8cm x 152.4cm

Vertical Hanging Banner Stand

No. 142275

Durable stand with adjustable height.

Dimensions: up to 105" or 266.7cm

SIGNAGE



For Real Banner

Vinyl banner available in two styles.

Deluxe Horizontal Banner

No. 142250

Heavy-duty vinyl construction.

Dimensions: 8' x 3'

2.438M x .9144M

Horizontal Banner

No. 142271

Dimensions: 8' x 3'

2.438M x .9144M



These panels fold into a triangle as shown left.

ZM Topper/Counter Card - For Real

No. 142268

Great for the top of your ZM display or on the counter.

(2 panels-For Real logo, 1 panel-Great Gift Ideas)

Dimensions: 8.5" x 9"/panel (3 panels)

21.59cm x 22.86cm/panel (3 panels)



Black Cardboard Logo Sign

No. 142270

Zippo corporate logo printed on high gloss coated stock.

Dimensions: 30" x 12"

76.2cm x 30.48cm



Counter Sign

No. 142127

Zippo For Real logo on dark plexiglas.

Dimensions: 10" x 5"

27.31cm x 12.7 cm

POSTERS

new



The Name in Flame Poster

No. PSTR-NF

Dimensions: 22" x 17"

55.88cm x 43.18cm



Days of the Week Poster

No. PSTR-BBD

Dimensions: 27" x 19"

68.58cm x 48.26cm



Classic American Story Poster

No. PSTR-CAS

Dimensions: 39.5" x 13.25"

100.3cm x 33.65cm

POSTERS



Hip History Poster

No. PSTR-HH

Dimensions: 39.5" x 18"
100.3cm x 45.72cm



Anatomy Poster

No. PSTR-A

Dimensions: 17" x 22"
43.18cm x 55.88cm



Click It Poster

No. PSTR-CL

Dimensions: 33" x 33"
83.82cm x 83.82cm



American Flag Poster

No. PSTR-AF

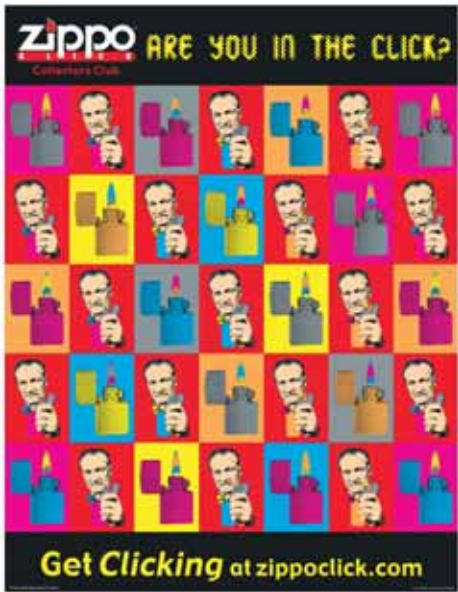
Dimensions: 24.5" x 18"
62.23cm x 45.72cm

ZIPPO CLICK

new look



Click Membership Brochure
No. ZCF05
Application to join the Zippo Click.



Click Poster
No. PSTR03-ZC
Dimensions: 17" x 22"
43.18cm x 55.88cm



Collectors' Guide
No. COLL-05
Includes Zippo lighter identification codes and other collector information.

Zippo Click is the gateway into the world of Zippo lighter collecting. With members in 56 countries around the world, Zippo enthusiasts interact with the growing community of people who buy, sell, trade, collect, and talk Zippo.



LANYARDS KEEP YOUR ACCESSORIES HANDY.



Enlarged detail of logo imprint

Zippo Round Lanyard
No. 122122
Dimensions: 38"
96.52cm

Corded lanyard has two adjustable slides to regulate degree of tightness, and detachable 1" key ring with snap clip, bulldog clip, and nylon loop.



Enlarged detail of logo imprint

Zippo Woven Neck Strap
No. 122121
Dimensions: 42"
106.68cm

Flat woven lanyard has detachable spring loaded swivel snap clip and 1" key ring with snap clip and nylon loop.



Zippo Change Mat

No. CM02

Perfect for countertop or next to your cash register.

Dimensions: 18.25" x 12.25"
46.36cm x 31.12cm



Zippo Mouse Pad

No. MP02

Control your mouse-Zippo style!

Dimensions: 8.25" x 7.75"
20.96cm x 16.68cm



new



Lighter Display Base

No. 142226

Highlight any Zippo pocket lighter with these great lighter display bases. Lighters fit snug into base and are held in magnetically. Great for use with Small and Large Showcases.

(Please order in multiples of 10).

Dimensions: 2.5" x 1.375" x 1.8125"
6.35cm x 3.492cm x 4.604cm



Magnet

No. 142224

Rugged 3-D magnet, extra thick.

Dimensions: 2.75" x 3.375" x .375"
6.985cm x 8.5725cm x .9525cm



new

Sticky Note Pads

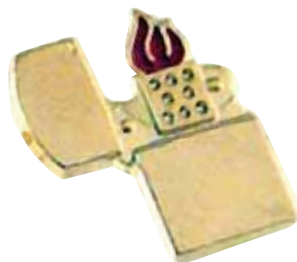
No. ZPIN

Don't miss out on any important details with these reminder notes.

Features the Zippo logo and "The Name in Flame" tag.

Dimensions: 3" x 2.875"

7.62cm x 7.302cm



Zippo Lighter Bobble Pin

No. ZS-158

Adding some "spring" to an American original.

Attached flame bobbles.

Dimensions: 1.0625" x 1.25"

2.6987cm x 3.175cm



Zippo Lighter Lapel Pin

No. 151001

Brass plated pin with red flame, tie-tack back.

A classic Zippo icon since the 1960's!



Zippo Ashtray

No. ZAT

Durable ashtray with Zippo logo.

Dimensions: 5.25" diameter

13.34cm diameter



new

Flint-Wheel Ashtray

No. ZFWAT

Inspired by the design of the Zippo

Flint wheel, our heavy-duty ashtray is

embossed with the Zippo logo.

Dimensions: 5.5" diameter

13.97cm diameter

POSTCARDS



Anatomy Postcard
 No. PC-7
 Dimensions: 4.25" x 6"
 10.8cm x 15.24cm



Flag Postcard
 No. PC-35
 Dimensions: 6" x 4.25"
 15.24cm x 10.8cm

LICENSE PLATES

DRIVE YOUR



Zippo MotorSports
 No. ZLP-MS
 Dimensions: 12" x 6"
 30.48cm x 15.24cm



Zippo Logo
 No. ZLP
 Dimensions: 12" x 6"
 30.48cm x 15.24cm

THE WORLD'S BEST LIGHTER IS IN THE

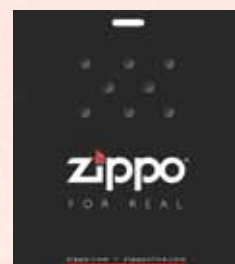
SHOPPING BAGS



No. 142263
 Dimensions: Large Size 25" x 28"
 63.5cm x 71.12cm



No. 142262
 Dimensions: Medium Size 15" x 18"
 38.1cm x 45.72cm



No. 142261
 Dimensions: Small Size 6" x 8"
 15.24cm x 20.32cm

APPAREL



new

Zippo Cap
No. P06HT

Black color cotton cap features white Zippo logo with red flame and adjustable strap with tuck-in closure.



new

Zippo T-Shirt
No. P06RT

Distressed-look American classic Zippo logo. Pre-shrunk 90% cotton & 10% polyester heather grey t-shirt with black neck and sleeve binding.
Men's sizes: Medium - XXL



Zippo Rib Textured Shirt

No. P05T

When a T-shirt isn't enough but a sport shirt is too much, here is the perfect solution. Wear this black shirt by itself or under a sport coat. Heavyweight fabric made from 6.5-ounce, 100% ring spun combed cotton, featuring Zippo logo on left sleeve.
Men's sizes: Small - 3X

Zippo Microfiber Jacket

No. P05JK

Water-repellent and wind-resistant, this jacket stands up to all weather conditions with superior lightweight comfort, drape, softness, shape retention and durability. Made of 89% polyester, 11% nylon peached microfiber. Black jacket features grey embroidered Zippo logo.
Men's sizes: Small - 3X



new



Zippo Mens/Ladies Polo

No. P06MP (Men's) No. P06WP (Women's)

Men's polo: 60% polynosic & 40% polyester.
Ladies' polo: 70% rayon polynosic & 30% polyester.
This oh-so-comfortable top features soft fabric with subtle pattern and embroidered Zippo logo.
Men's sizes: Medium - XXXL
Ladies' sizes: Small - XL

©2005 Zippo Manufacturing Co.
All lighter decorations are copyrighted by Zippo Manufacturing Co.
All Rights Reserved.



zippo[®]

The name in flame.[™]

zippo.com

